

CRABS AND WRACK



By: Konstantin, Anna, Jordanne and Matilda.

BACKGROUND INFORMATION

The type of crab is the *Carcinus Maenas*. This crab is found in shallow waters. It is native to European countries, but has invaded a lot of other countries.



THE OBSERVATION

Crabs run to the wrack when you approach
the water.

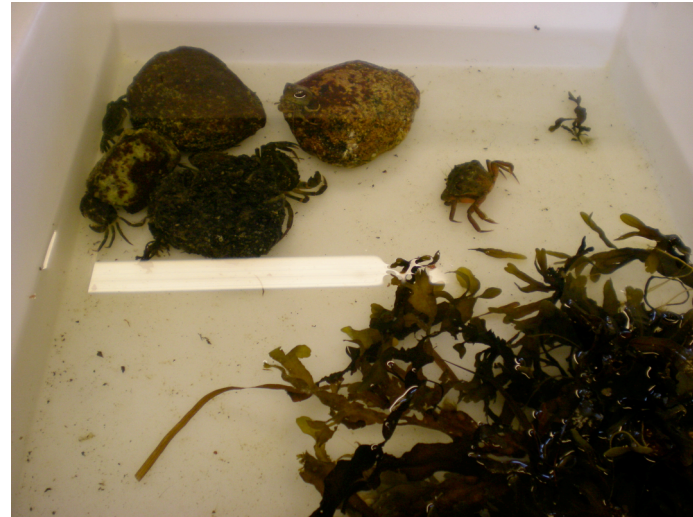


MODEL

Crabs get scared and hide in the wrack for
Camouflage.



HYPOTHESIS



Crabs will run into the wrack when we scare them.



NULL HYPOTHESIS

The crabs do not run into the wrack when we
scare them



EXPERIMENT 1

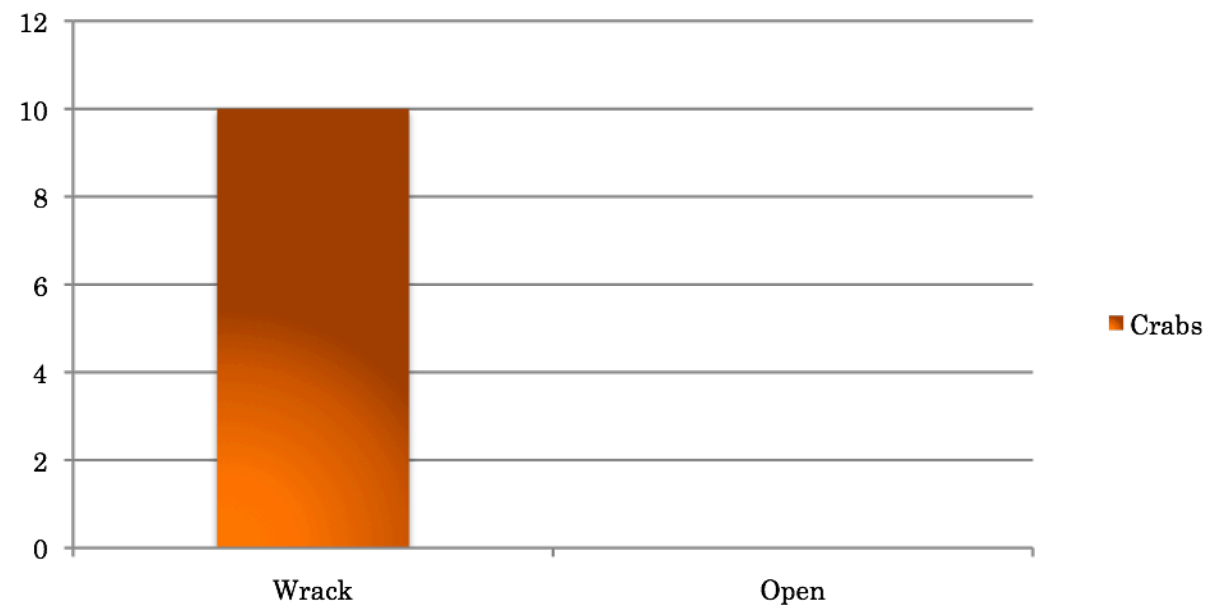
We put wrack in one corner of a container.

We put the crabs in the middle of the container and watched which direction they ran, to see which they preferred.



THE RESULTS (EXPERIMENT 1)

Do crabs prefer the open or the wrack?



$P = 0.0010$



EXPERIMENT 2

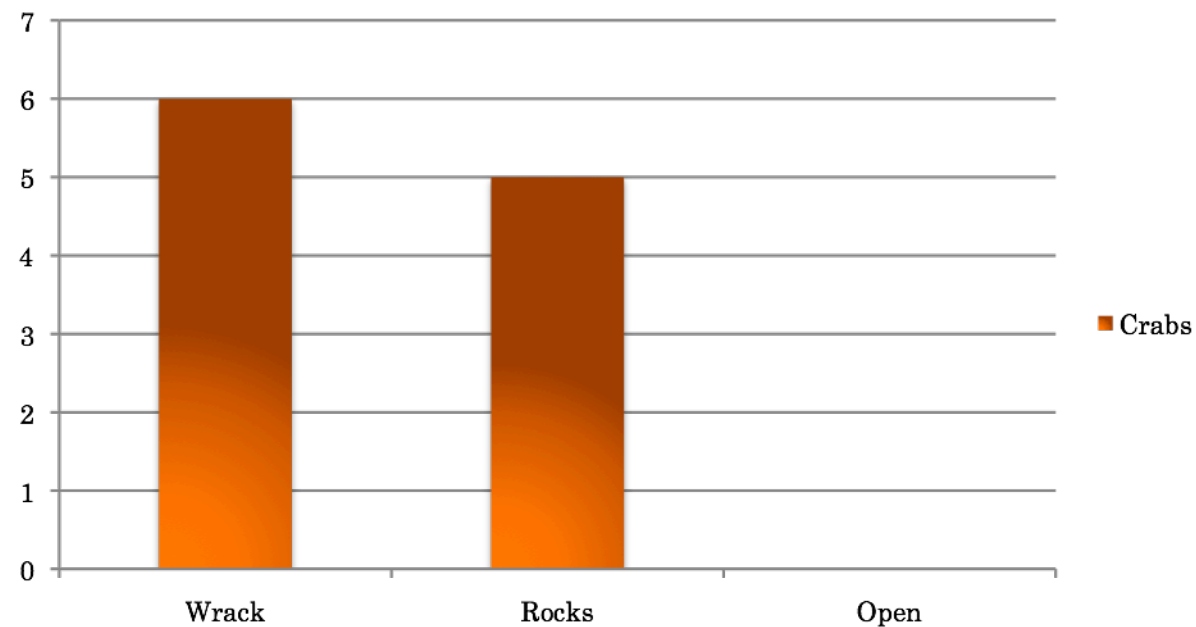
In one corner of the container there was wrack and in the other corner we put some rocks. We then left them over night, to see which they preferred.





THE RESULTS (EXPERIMENT 2)

Do crabs prefer the wrack, the rocks or the open?



$P=0.3770$



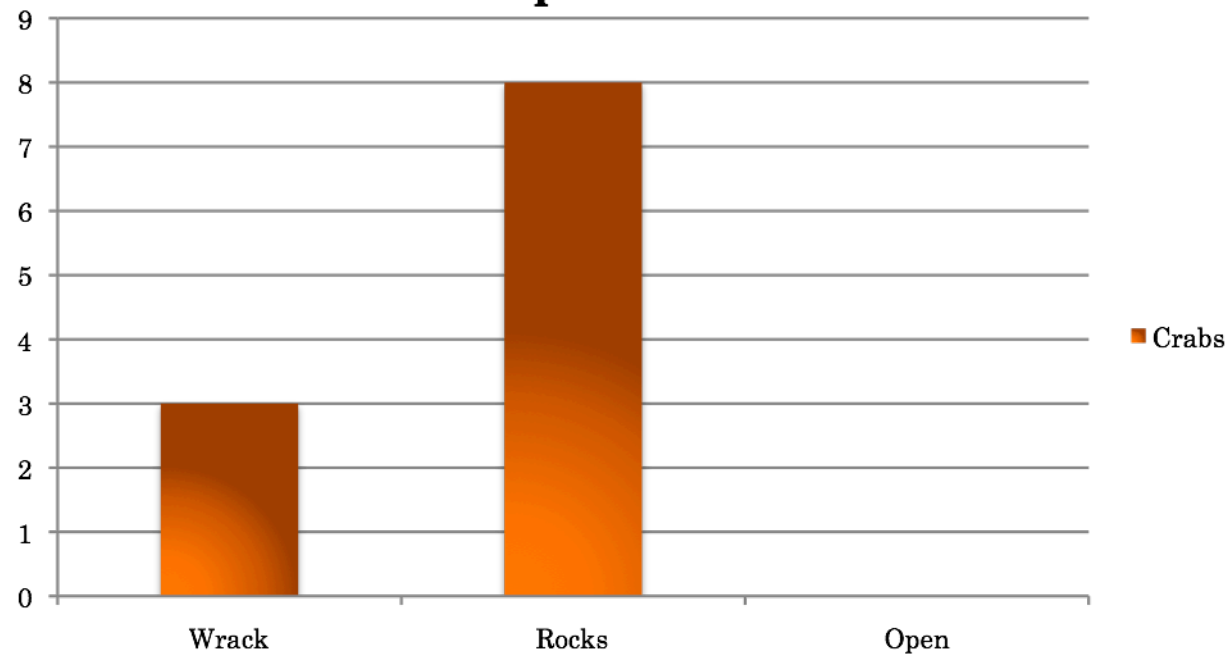
EXPERIMENT 3

In one corner of the container there was rocks
and in the other corner there was wrack.
We then scared the crabs to see which one they
Preferred to hide in.



THE RESULTS (EXPERIMENT 3)

Do Crabs prefer the wrack, rocks or open?



$P=0.1719$

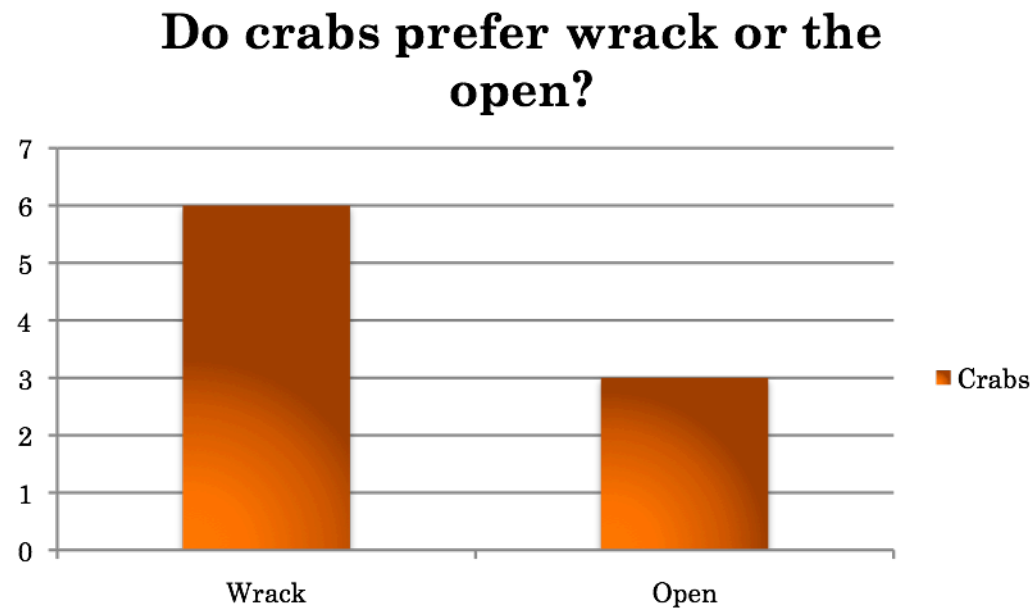


EXPERIMENT 4

In one corner of the container there was wrack
and the other there was nothing.



THE RESULTS (EXPERIMENT 4)



During this experiment, one crab died and another one escaped.

$P=0.3770$



INTERPRETATION

Overall, most of the crabs prefer to run to the wrack or rocks when they are scared.

This is probably because they it's easier for them to hide.

They provide camoflague for the crabs.

Therefore the hypothesis is supported by our results.



THE END!!!

